

Rigid safety springs

of 1 to 3 elements for 8 mm and 14 mm profiles

Application

Rigid safety springs are used together with the tubular drives with automatic detection of anti-lifting devices, such as **RP+ up to 20 Nm** for roller shutters.



Warning

Rigid safety springs are only suitable for use with tube diameters of 50 and 60 mm and should not be used for tube diameters of 40 mm.

This high quality safety device is particularly suited for mini profiles. It is space-saving and when fitted with two safety springs can withstand a vertical thrust of up to **120 kg**. This safety device lets you close the curtain securely.

No tools are required to connect the rigid safety spring to the tube – simply insert the two fastening hooks in their respective square slot (5 x 8 mm). The anti-lifting device has 3 different catches at distances of 58, 65 and 73 mm. These catches enable the fastening hooks to be adapted to suit the different slot spacing of the most common tubes.

Function

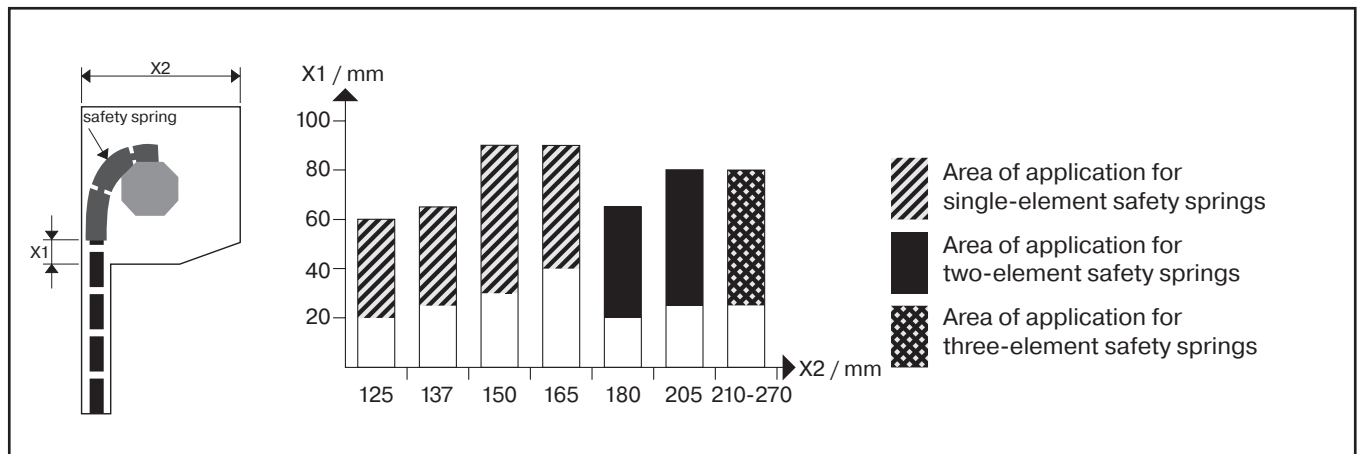
Rigid safety springs connect the shutter curtain to the barrel and act as an anti-lifting device. The safety springs press the roller shutter laths together, thus also preventing the roller shutter curtain from rattling.

Selecting the right safety spring (no. of elements)



Note

In order to ensure that the safety springs cannot be seen from the outside the minimum height of the roller shutter in the box is 20 mm.



Installation

Rigid safety springs are pushed onto the topmost lath of the roller shutter from the side using the correct mounting profile (8 mm or 14 mm). In doing so, the safety springs must be evenly distributed along the barrel and then secured to the barrel using fastening hooks, self-tapping screws or blind riveting accordingly.



Warning

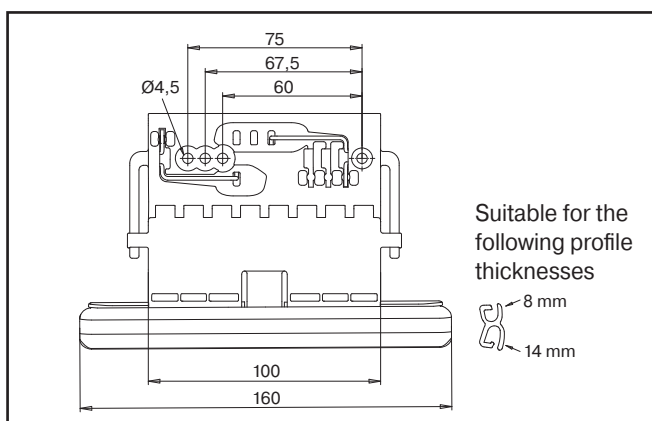
Any drilling of the barrel should be carried out prior to inserting the tubular drive in order to prevent damage to the drive. The length of the fastening screws or rivets must be such that it does not damage the housing tube of the drive.

The number of safety springs can be calculated as follows:

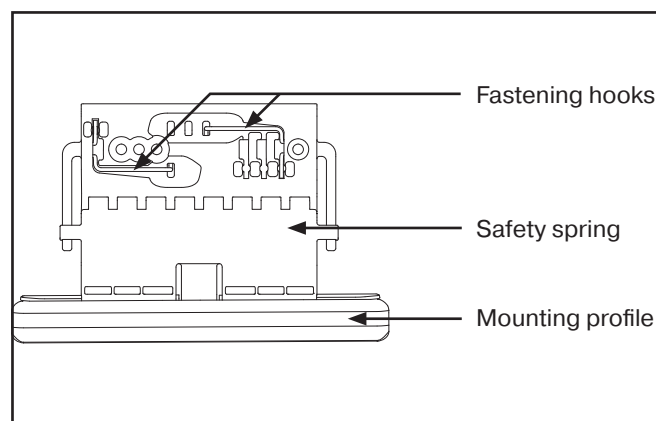
- The permissible curtain weight per safety spring is **max. 7 kg**
- One safety spring must be mounted at each end of the roller shutter, as close as possible to the guide tracks
- The distance between the safety springs must not exceed **800 mm**



Dimensional drawing



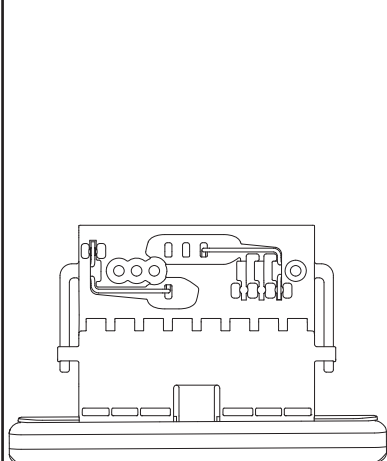
Components



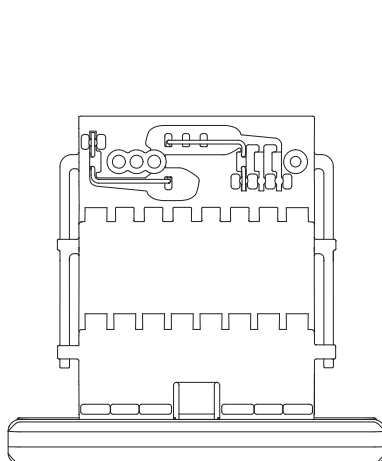
Safety springs

(Material: fibreglass-reinforced polyamide and Bezinal coated steel)

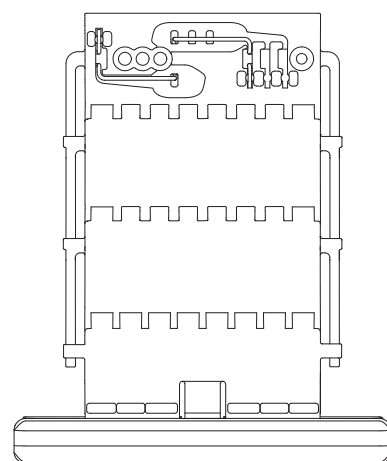
Rigid safety spring, 1-element
Item no. 4902 000 306 0



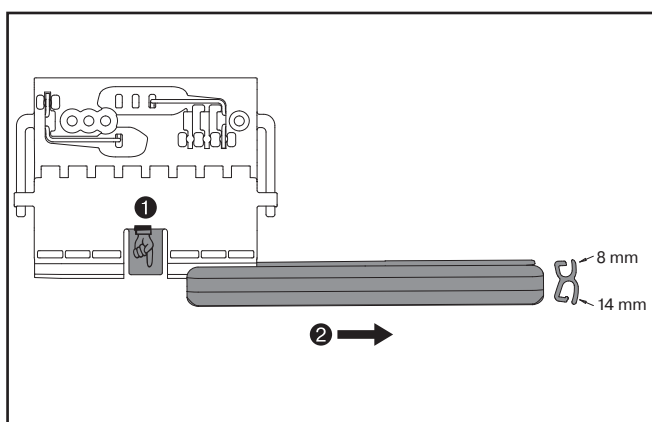
Rigid safety spring, 2-element
Item no. 4902 000 307 0



Rigid safety spring, 3-element
Item no. 4902 000 308 0



Removing the mounting profile for adaptation to the roller shutter profile (8 and 14 mm)



Removing the fastening hooks for adaptation to the tube

